

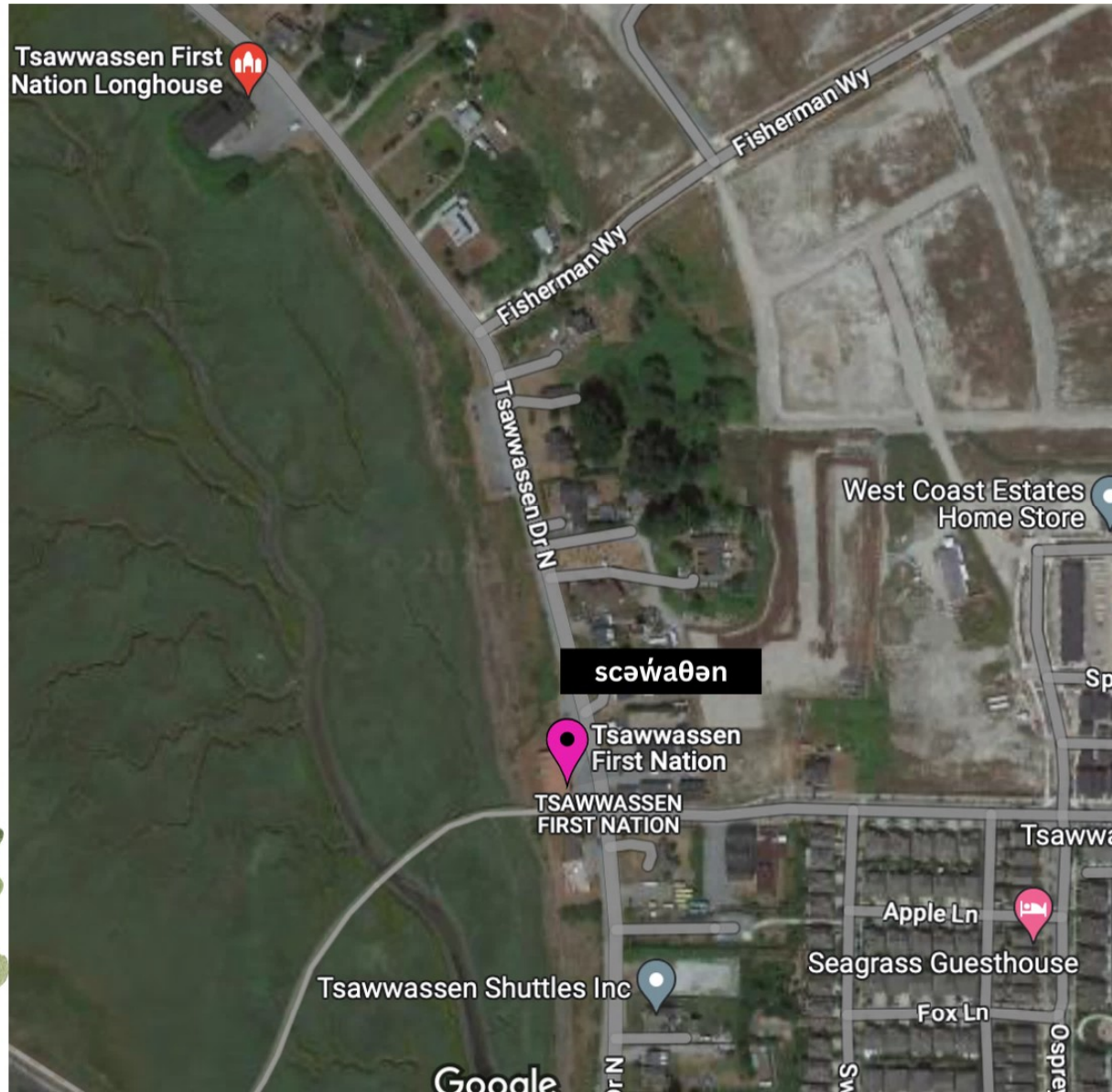
scáwaθanaʔt

təməx<sup>w</sup>



scáwaθən məsteyəx<sup>w</sup>

TSAWWASSEN FIRST NATION









smáqʷəc

Point Roberts

Diefenbaker Park

In Out Parcel

Tyee Dr

Can-Am Gas

TSB Shipping Plus

Ollie Otter Bakery

Whatcom County Fire District 5

Point Roberts Marina Resort

Lily Point Beach

Lily Point Marine Reserve

CANADA UNITED STATES

CANADA UNITED STATES

TSAWWASSEN BEACH

BOUNDARY BAY

ment Park



# kʷikʷə́ləməʔt təməxʷ



**Kwkwetlem First Nation**  
2-65 Colony Farm Road, Coquitlam, B.C. V3C 5X9  
604-540-0680



Kwkwetlem First Nation

**kʷikʷə́ləm**





Garden Trl

Kwikwetlem First Nation

Colony Farm Rd

Coquitlam River

© 2023 Google

Maquabeak Pk Connector

setlamákmon

Coquitlam River



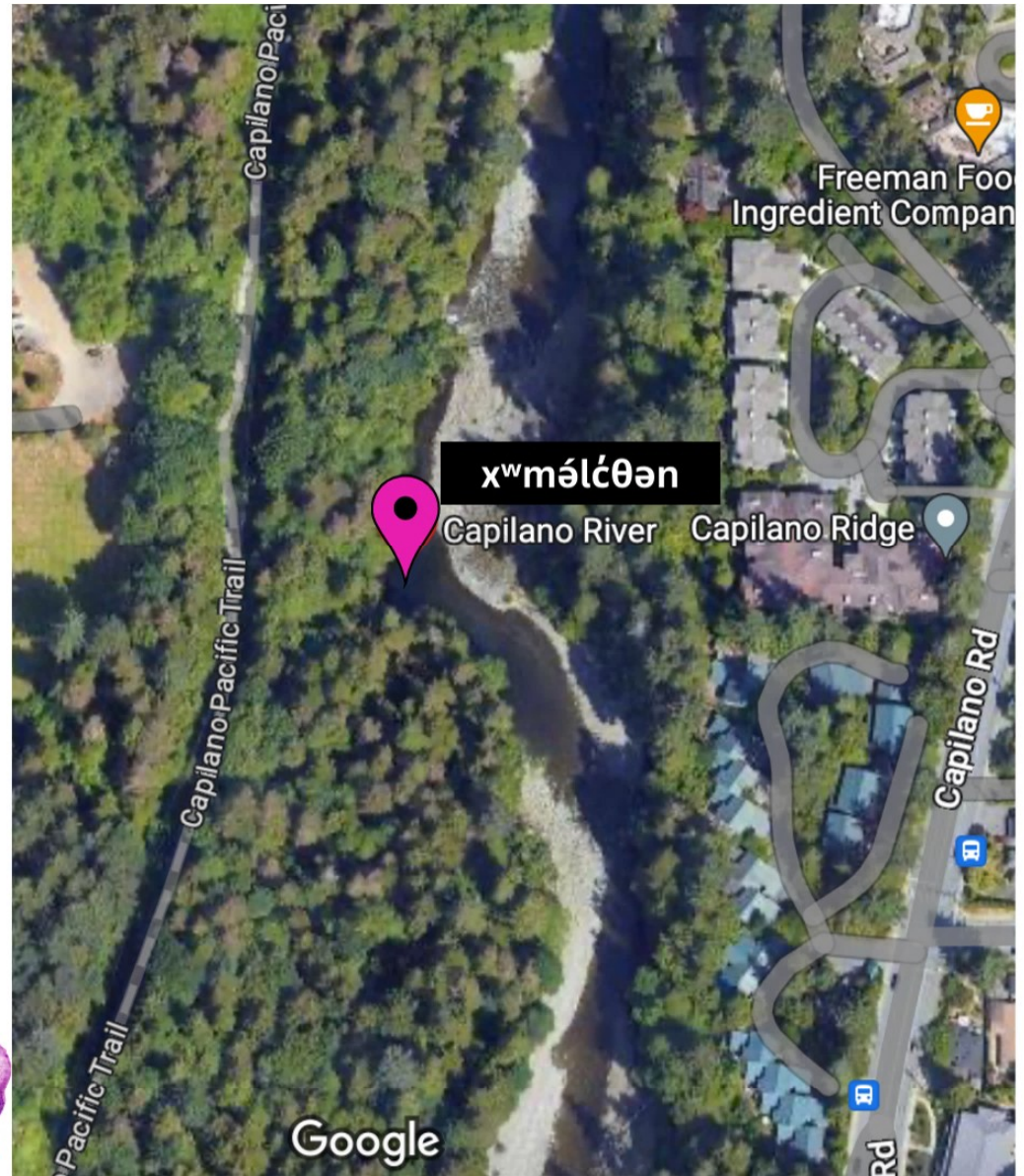


# χ<sup>w</sup>məθk<sup>w</sup>əýəmaʔt təməχ<sup>w</sup>



χ<sup>w</sup>məθk<sup>w</sup>əýəm

Musqueam  
Indian Band







skw0e?

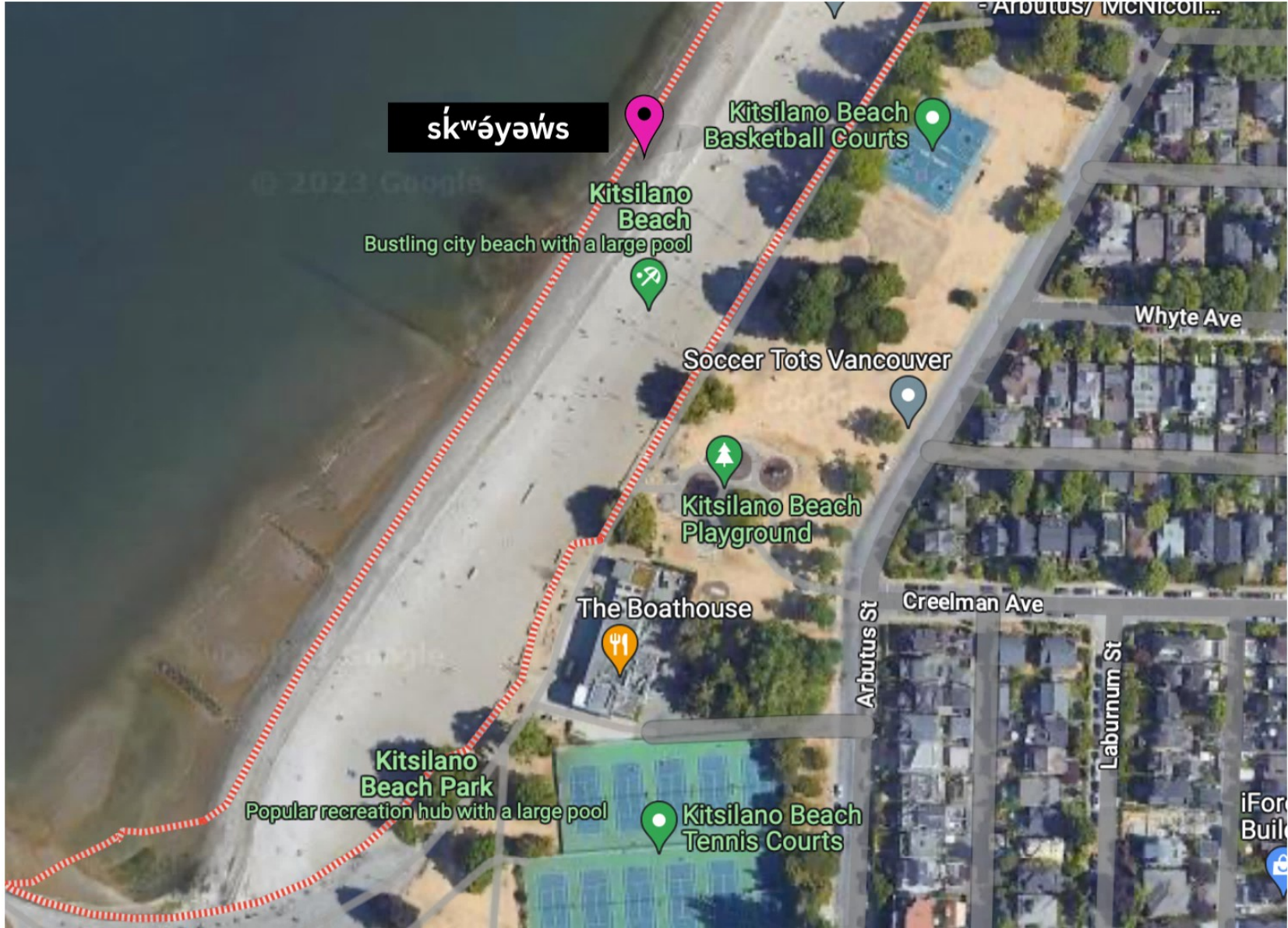
*Deadman's Island*

Her Majesty Canadian Ship Discovery

Naval Museum at HMCS Discovery

Vancouver Harbour CS weather (CWHC)





sk'wáyáw's

Kitsilano Beach Basketball Courts

Kitsilano Beach

Bustling city beach with a large pool

Soccer Tots Vancouver

Kitsilano Beach Playground

The Boathouse

Kitsilano Beach Park

Popular recreation hub with a large pool

Kitsilano Beach Tennis Courts

Whyte Ave

Creelman Ave

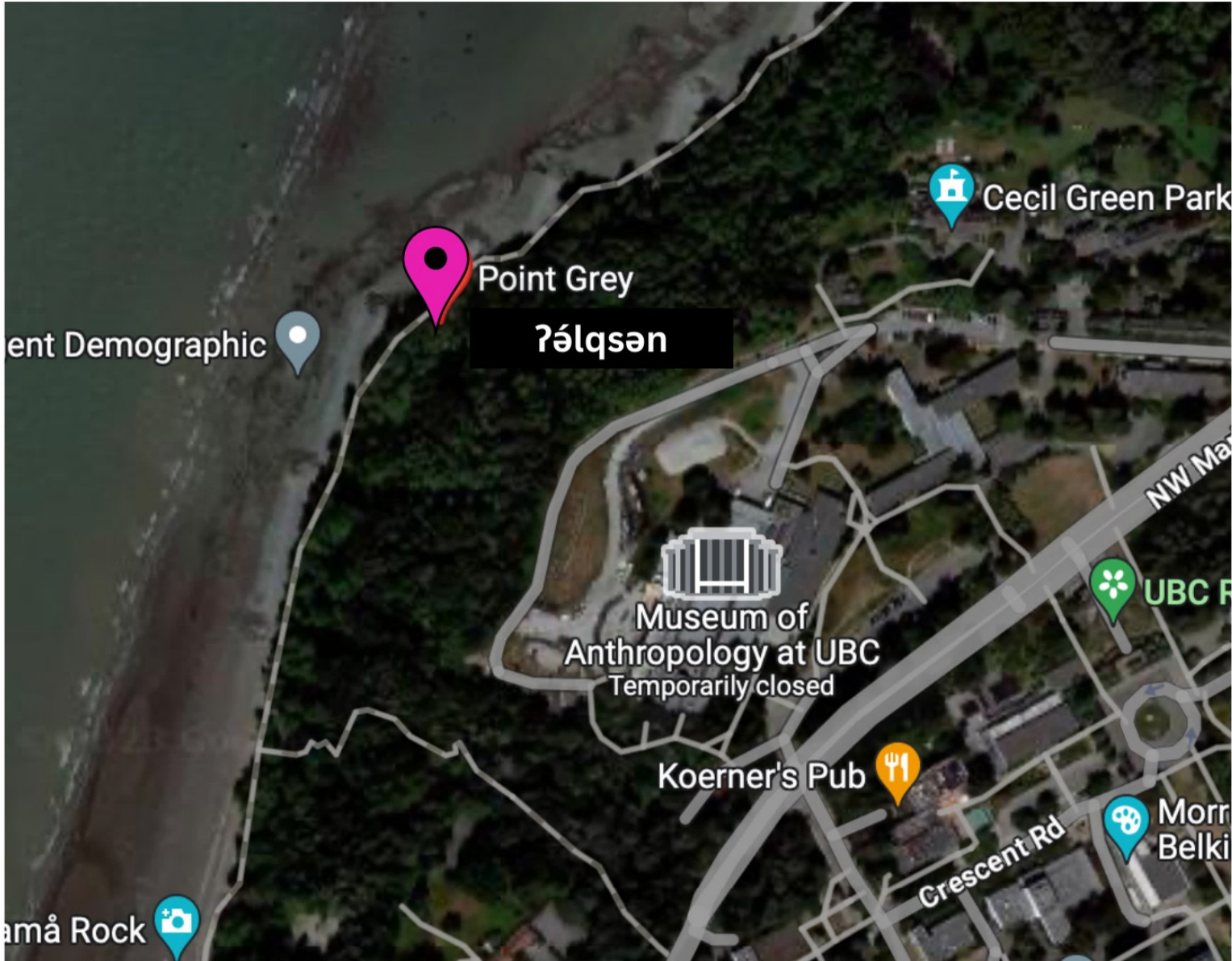
Arbutus St

Laburnum St

iFor Build

© 2023 Google

- Arbutus/ McNICOLL...



ent Demographic

Point Grey

ᑭᓴᓴᓂᓂ

Cecil Green Park

Museum of  
Anthropology at UBC  
Temporarily closed

Koerner's Pub

UBC R

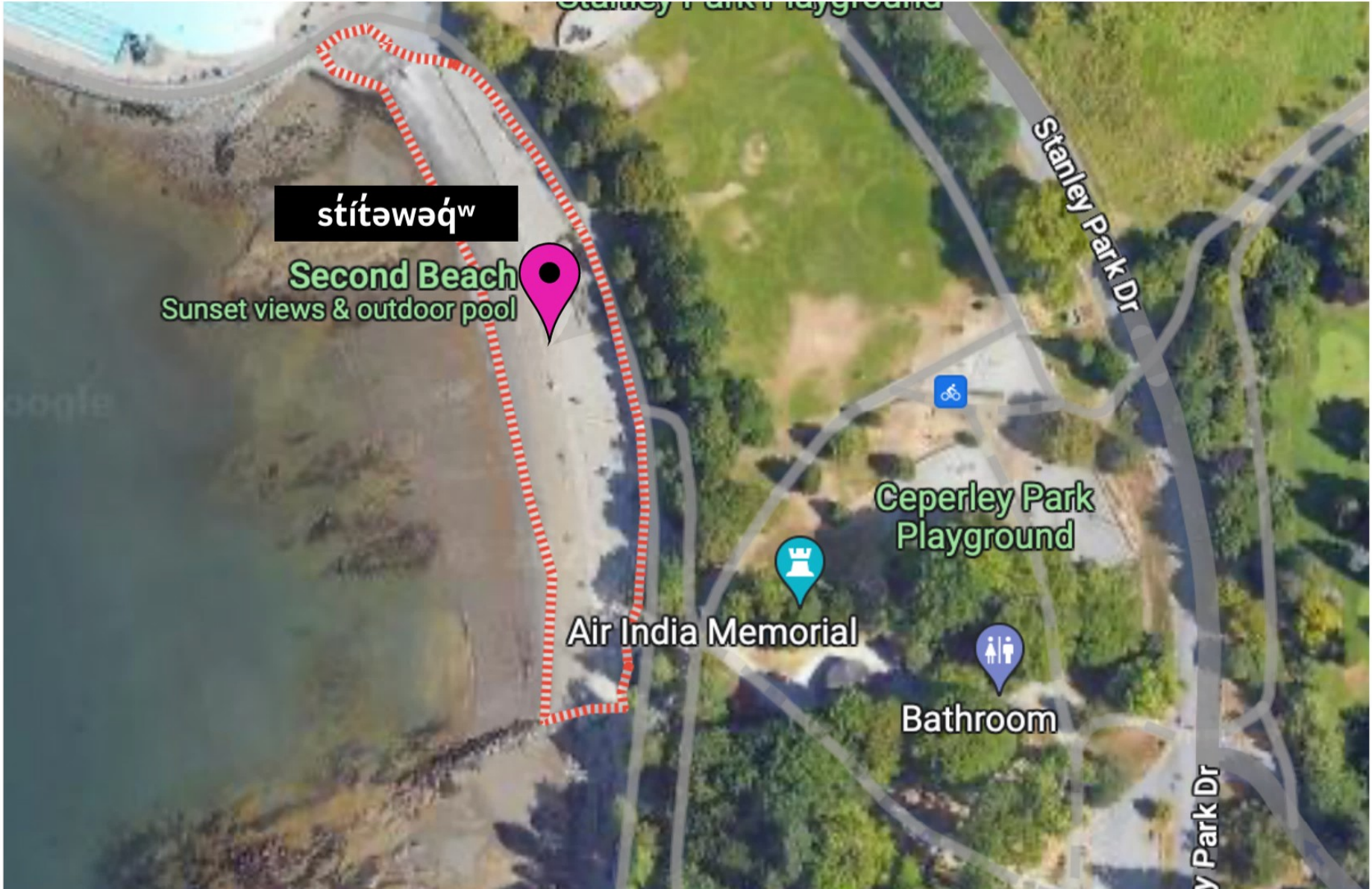
Morr  
Belki

amå Rock

Crescent Rd

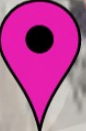
NW Ma





stítəwəq<sup>w</sup>

Second Beach  
Sunset views & outdoor pool



Ceperley Park  
Playground

Air India Memorial

Bathroom

Stanley Park Dr

y Park Dr



stxílax

Siwash Rock

Stanley Park Seawall Path

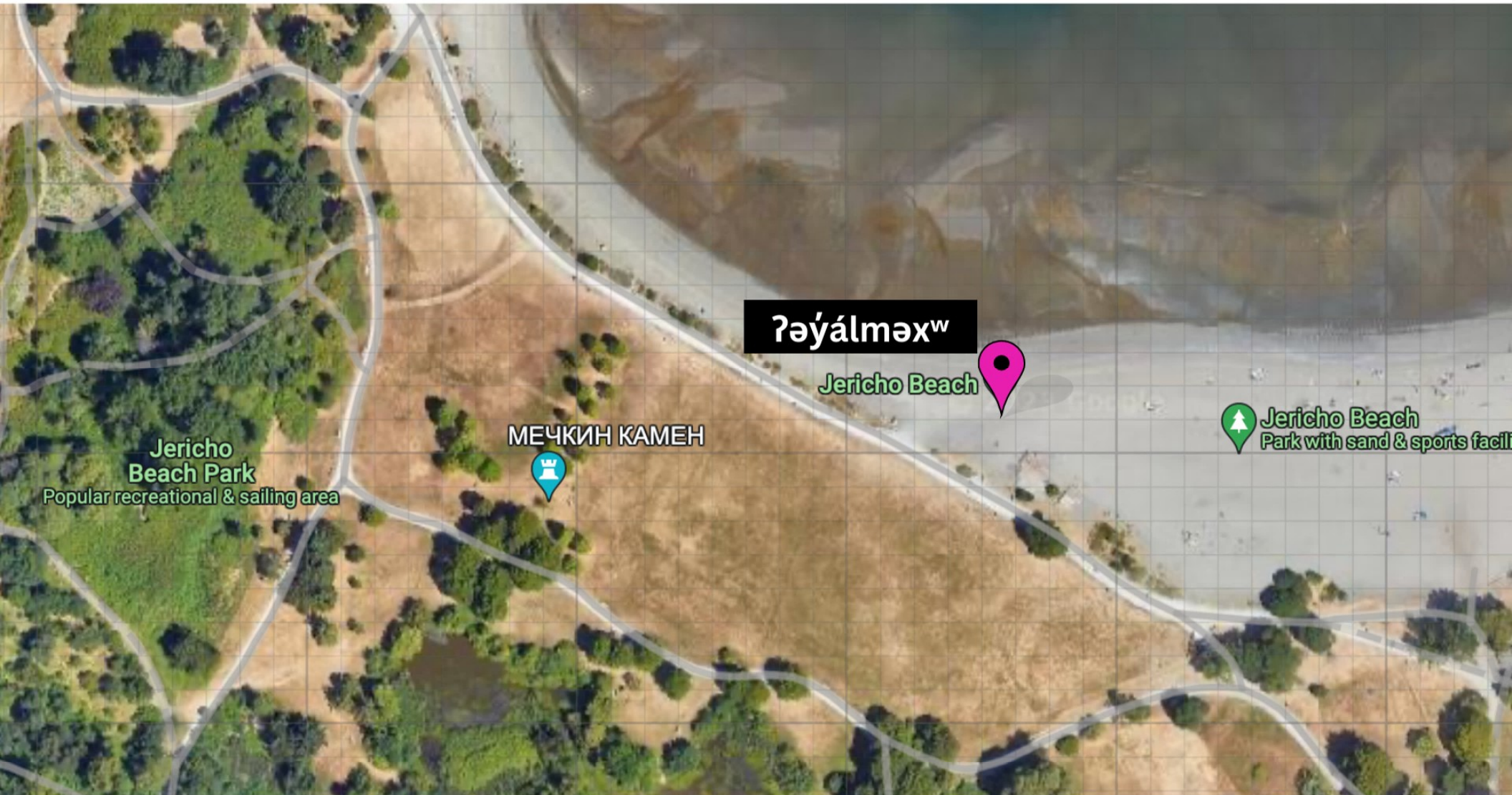
Stanley Park Seawall Path

Stanley Park Seawall Path

Stanley Park Seawall Path

© 2023 Google





ᠲᠡᠶᠢᠯᠮᠠᠬᠤ

Jericho Beach



МЕЧКИН КАМЕН



Jericho Beach  
Park with sand & sports facili

Jericho  
Beach Park  
Popular recreational & sailing area



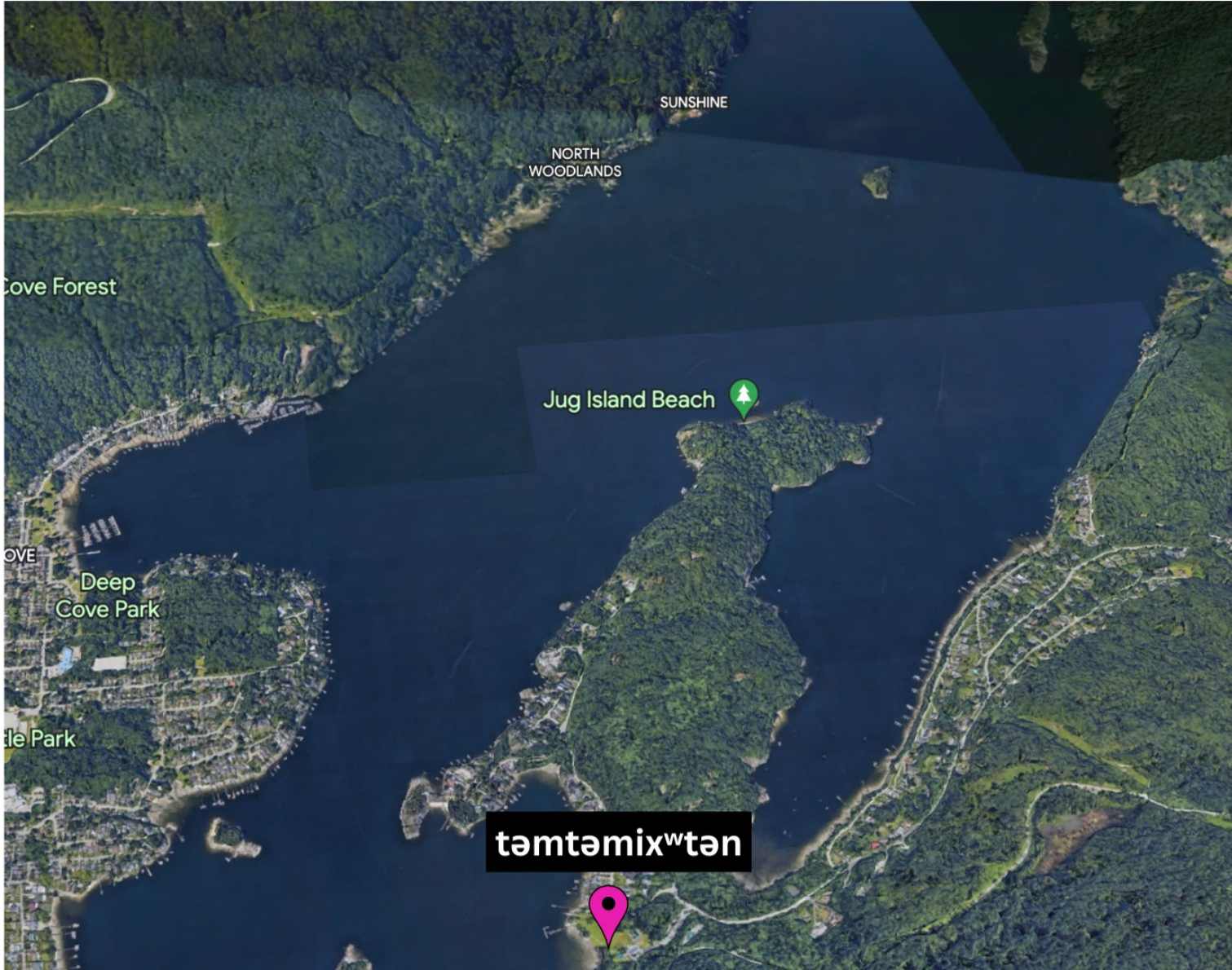


Tsleil-Waututh Nation  
PEOPLE OF THE INLET

**səlílwətətəʔt təməx<sup>w</sup>**







taal

  
*Boulder Island*



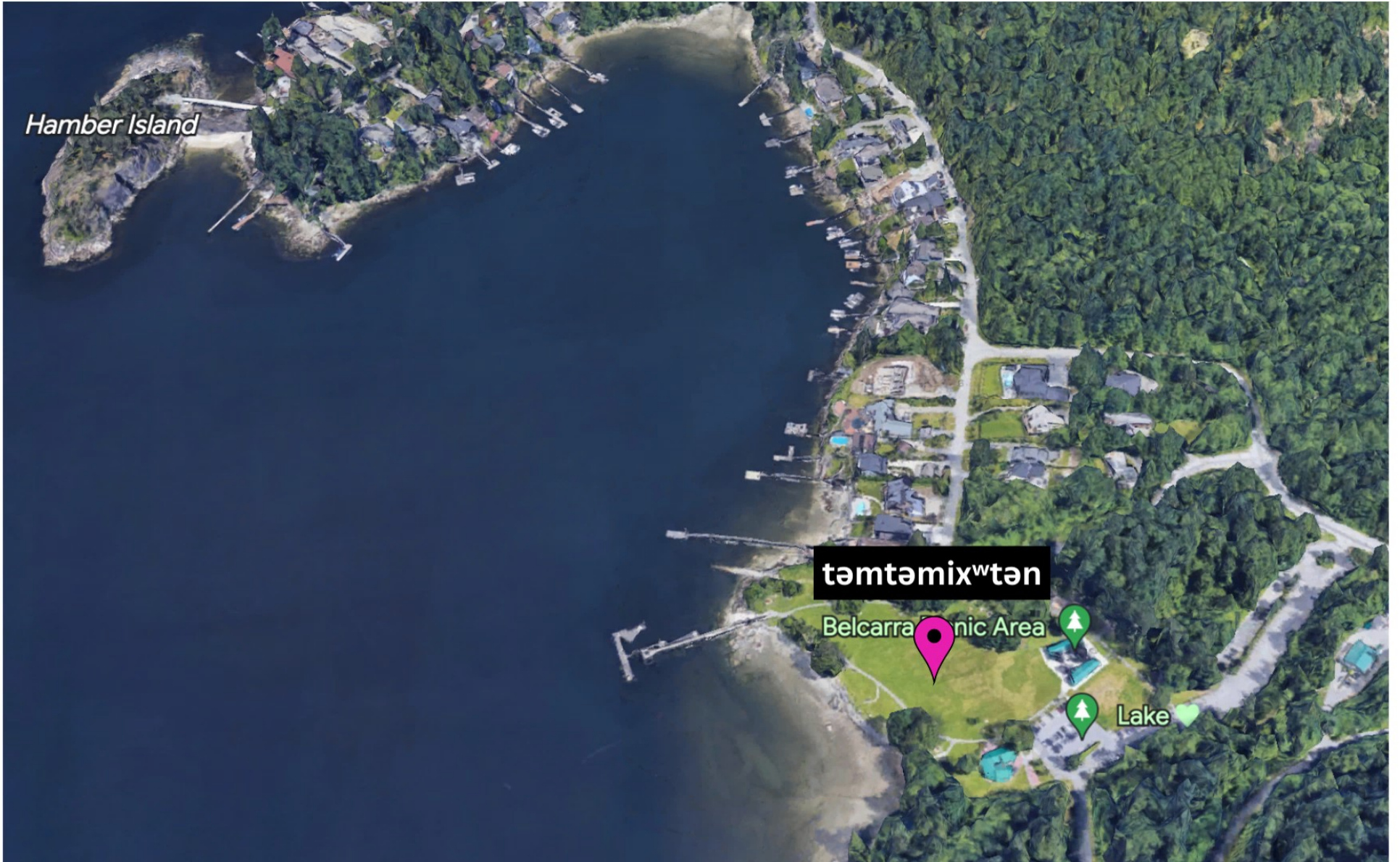


Hamber Island

təmtəmix<sup>w</sup>tən

Belcarra Picnic Area

Lake







Children Playground

sayamiton

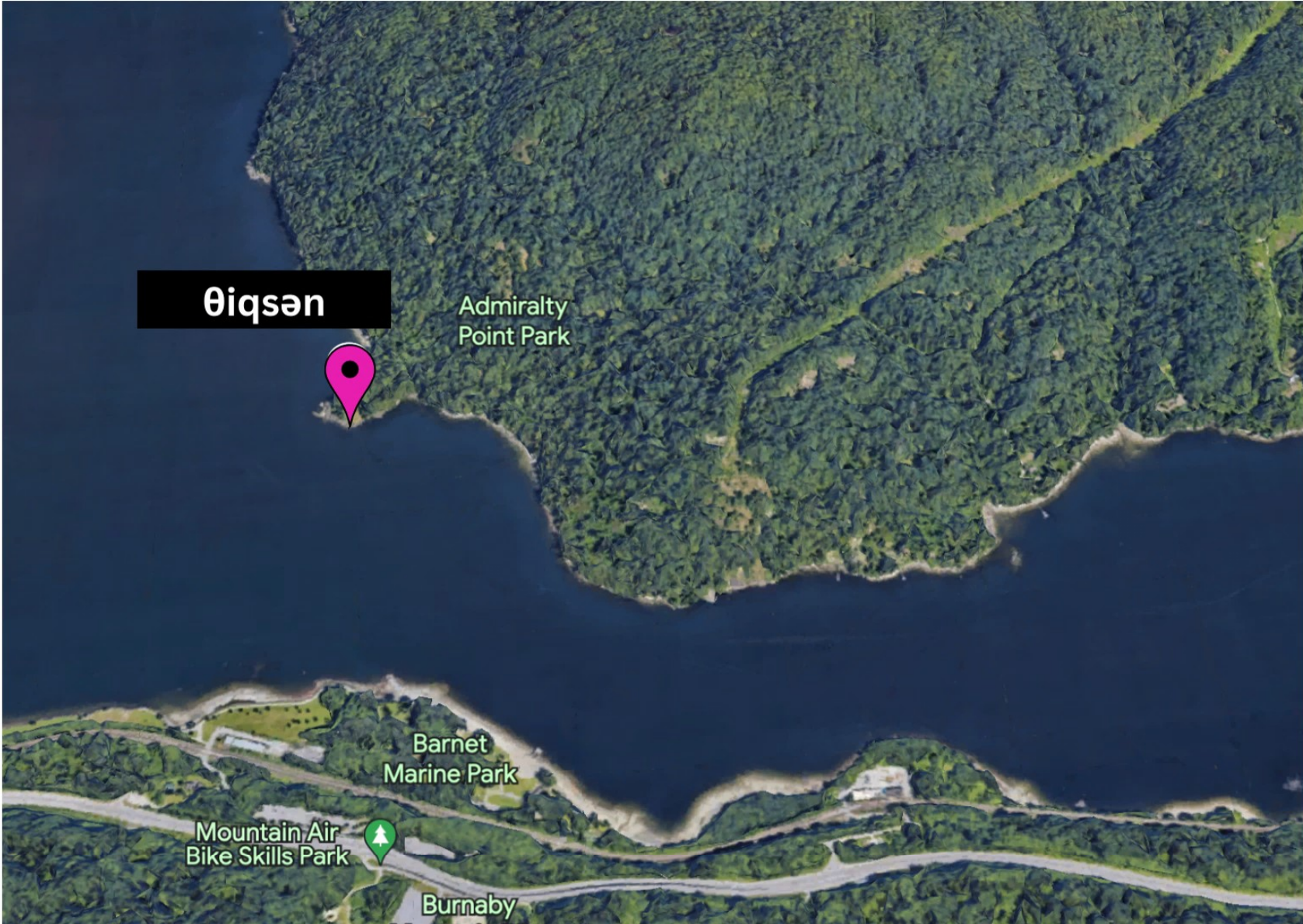
Strathcona Lookout Park

Grey Rocks  
Island









θiqsən

Admiralty  
Point Park

Barnet  
Marine Park

Mountain Air  
Bike Skills Park

Burnaby



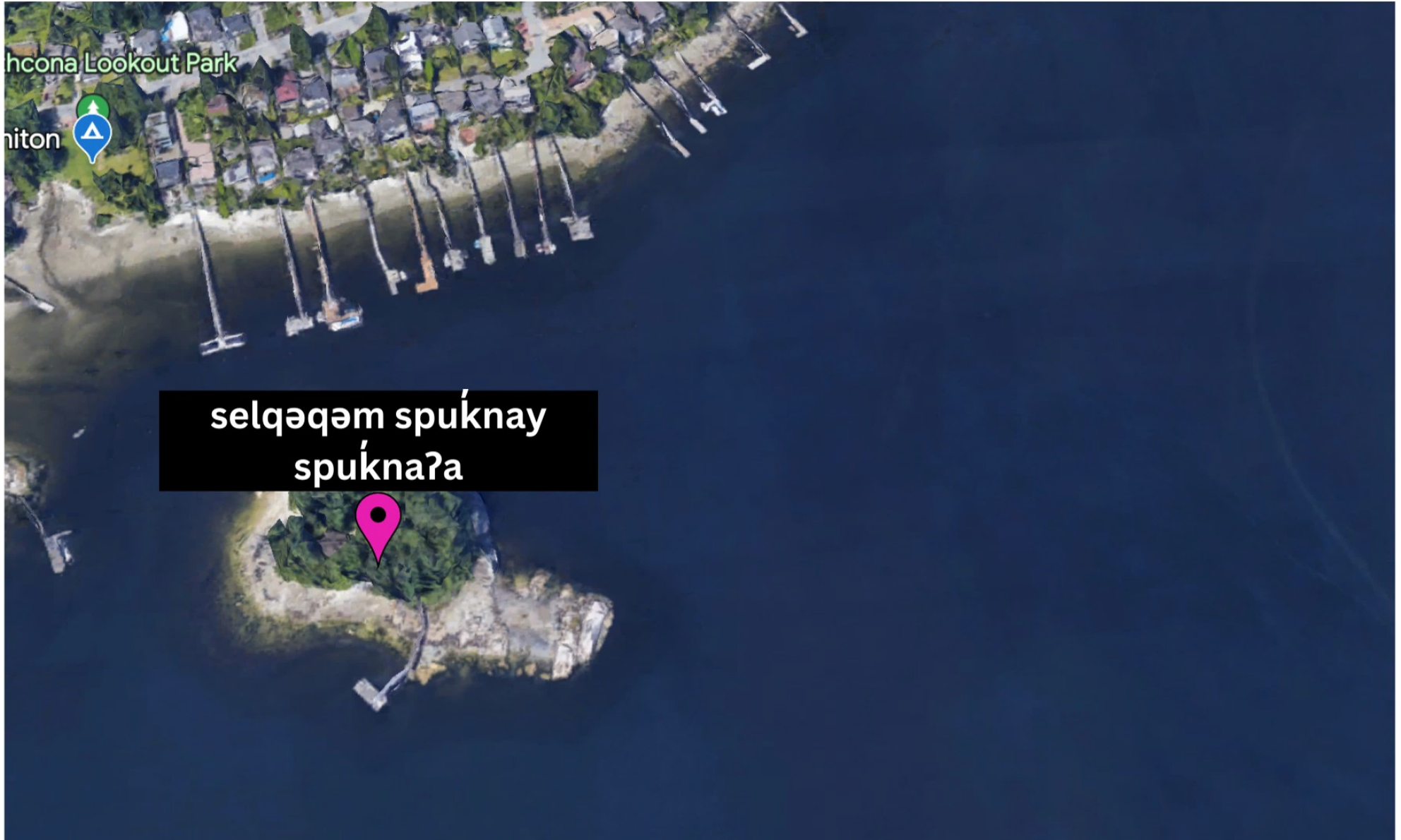


ᑭá:yt

Buntzen Lake

taytəmsən

Buntzen Lake  
Recreation Area



hcona Lookout Park

hilton

selqəqəm spuḱnay  
spuḱnaʔa









sq<sup>w</sup>sáθən

spálək<sup>w</sup>əqs

q<sup>w</sup>łáyəm

x<sup>w</sup>mécənətp<sup>əl</sup>

pəłχənéməx

North Arm

Sea Island

Vancouver International Airport (YVR)

erra Nova Rural Park

Richmond

Lulu Island

STEVESTON

Duck Island

Barber Island

Mitchell Island

NO 5 RD

NO 2 RD

STEVESTON HWY

WESTMINSTER HWY

ALDERBRIDGE WAY

BRIDGEPORT RD

SE MARINE DR

MARINE DR  
MARINE WAY

BYRNE RD

62B ST

Tilbury Island

Sunbury

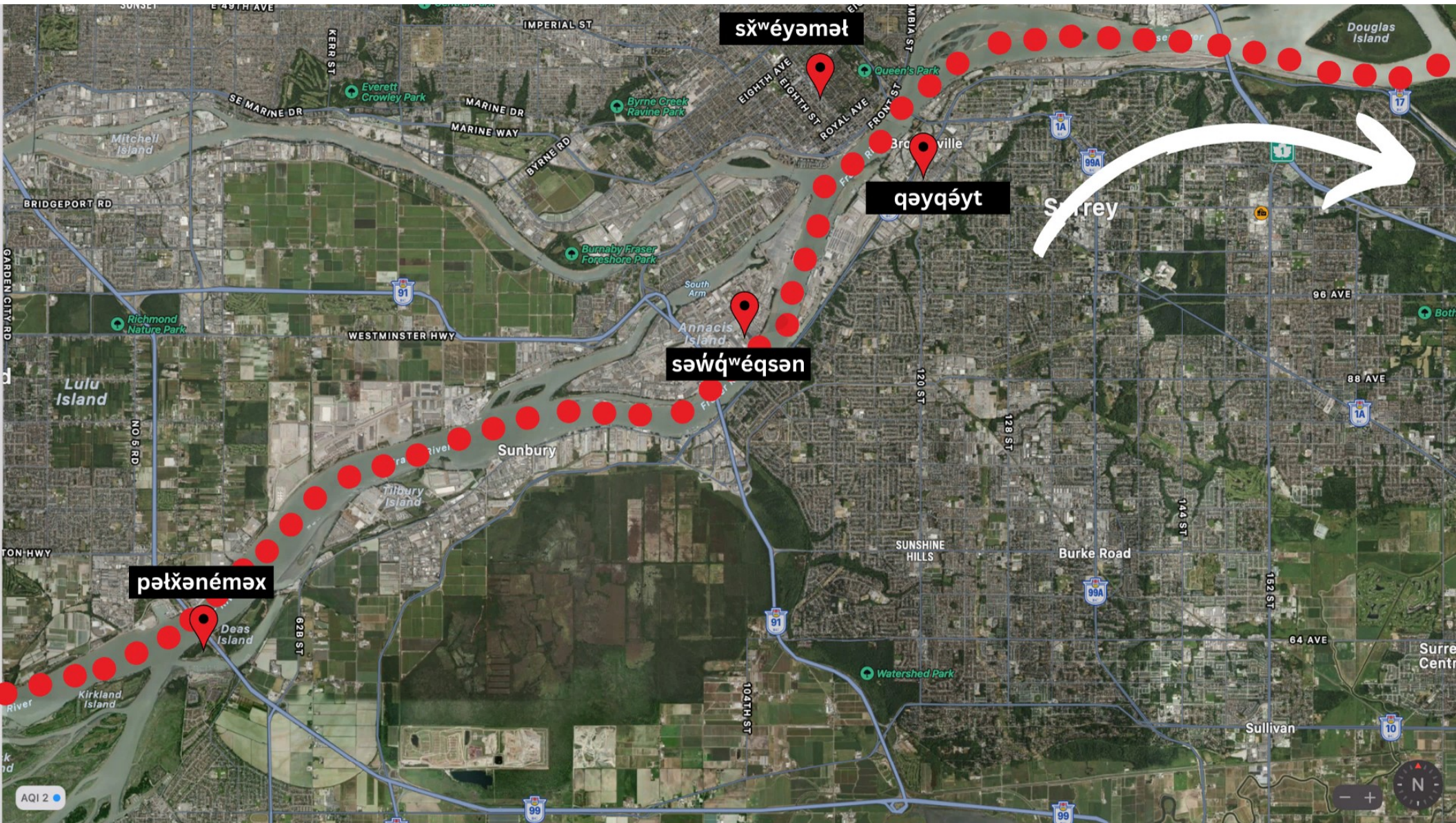
Everett Crowley Park

Burnaby Fraser Foreshore Park

Byrne Cree Ravine Park

99





s̓w'éyamət

qəyqəyt

səw̓q'wéqsən

pəłxənéməx

Surrey

Sunbury

SUNSHINE HILLS

Burke Road

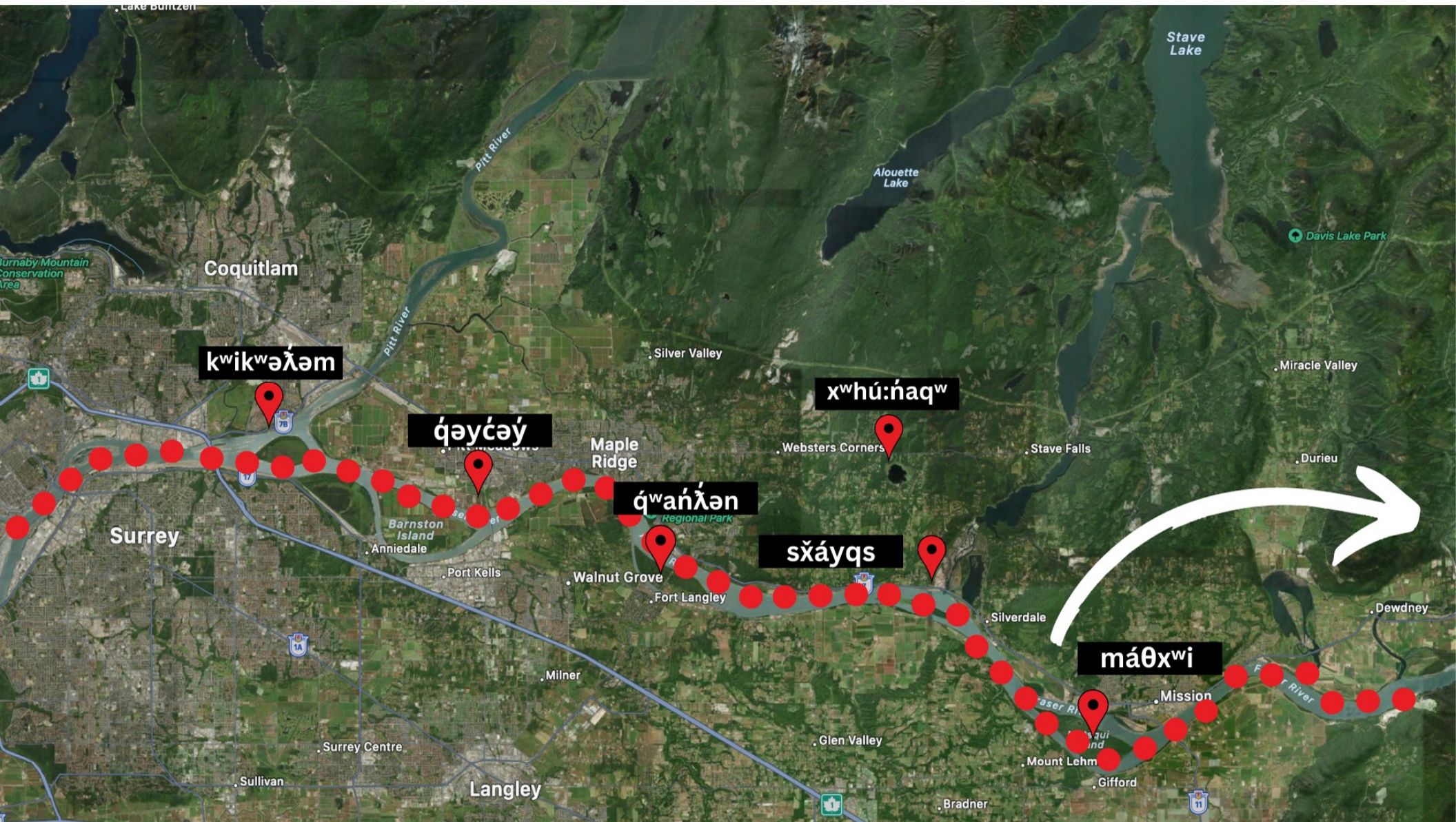
Surrey Centre

Sullivan

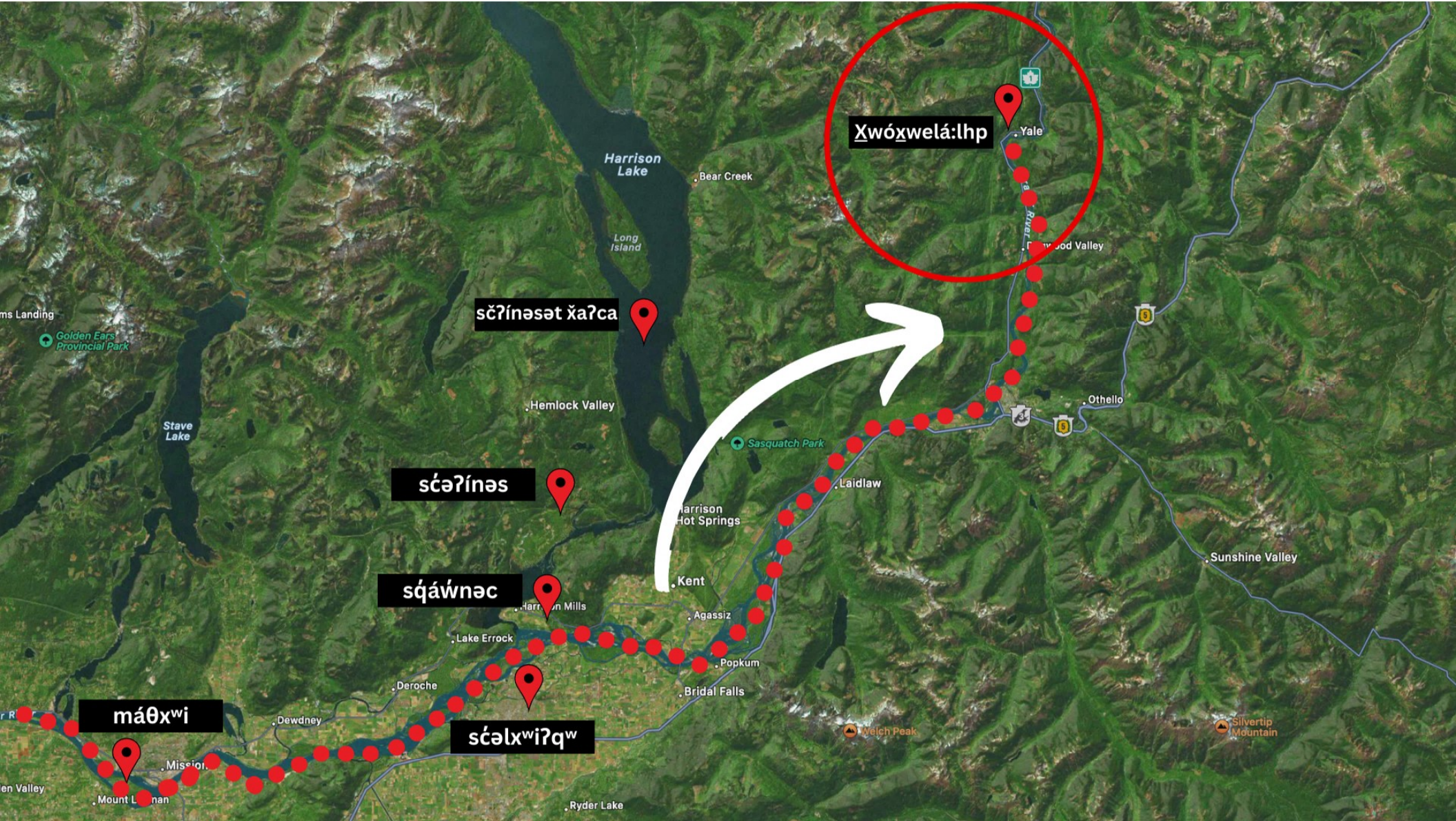
AQI 2











Χωρόχωμά:lhρ

scʔínəsət ʔaʔca

scəʔínəs

sqáʔnəc

máθxʷi

scəlxʷiʔqʷ

Harrison Lake

Long Island

Bear Creek

Hemlock Valley

Sasquatch Park

Harrison Hot Springs

Kent

Lake Errock

Agassiz

Popkum

Bridal Falls

Dewdney

Deroche

Ryder Lake

Yale

Wood Valley

Othello

Sunshine Valley

Welch Peak

Silvertip Mountain

Stave Lake

Golden Ears Provincial Park

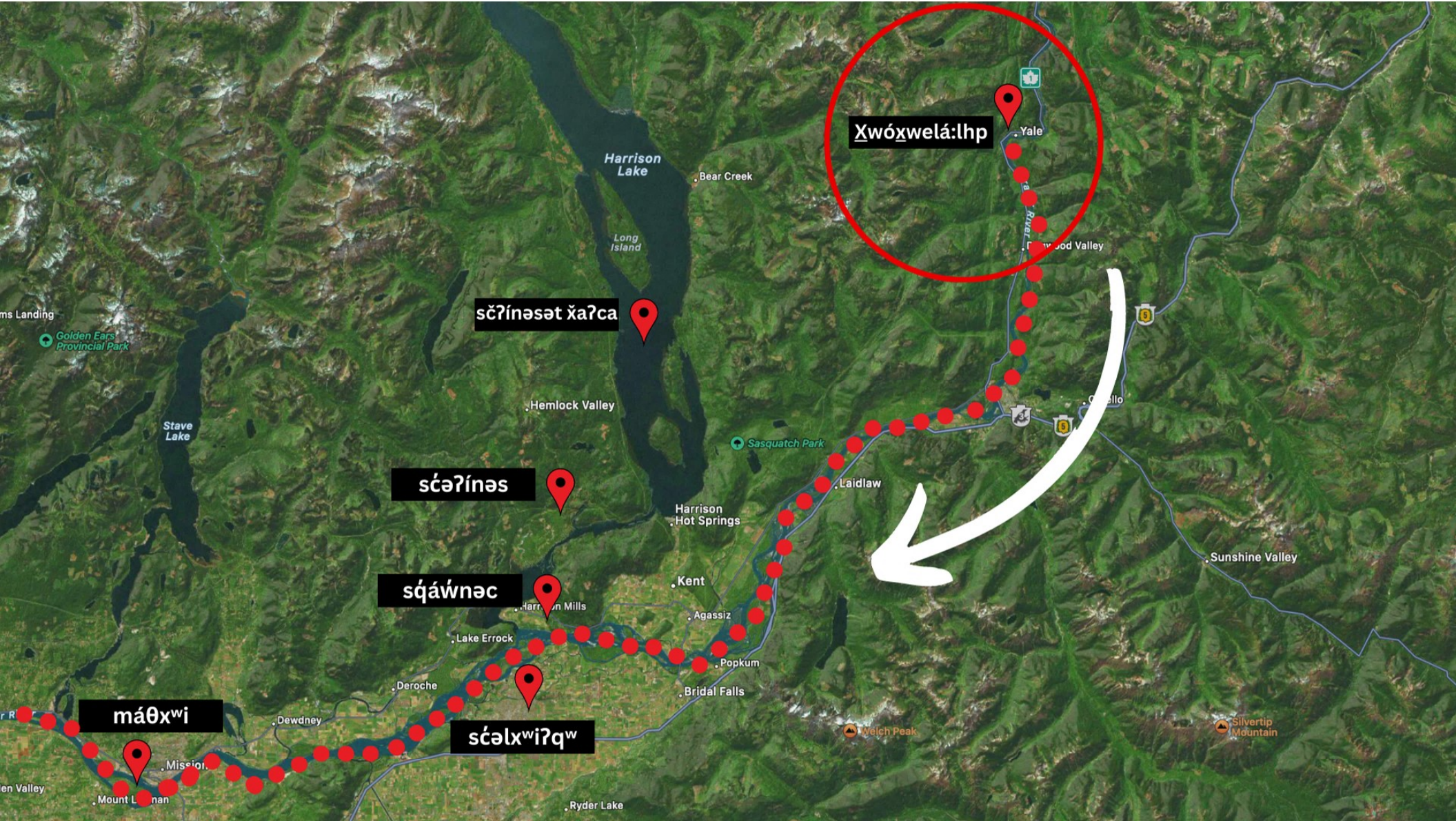
ms Landing

en Valley

Mount Lanan

Mission





scəwéłá:lhp

scəʔínəc

scəwéłá:lhp

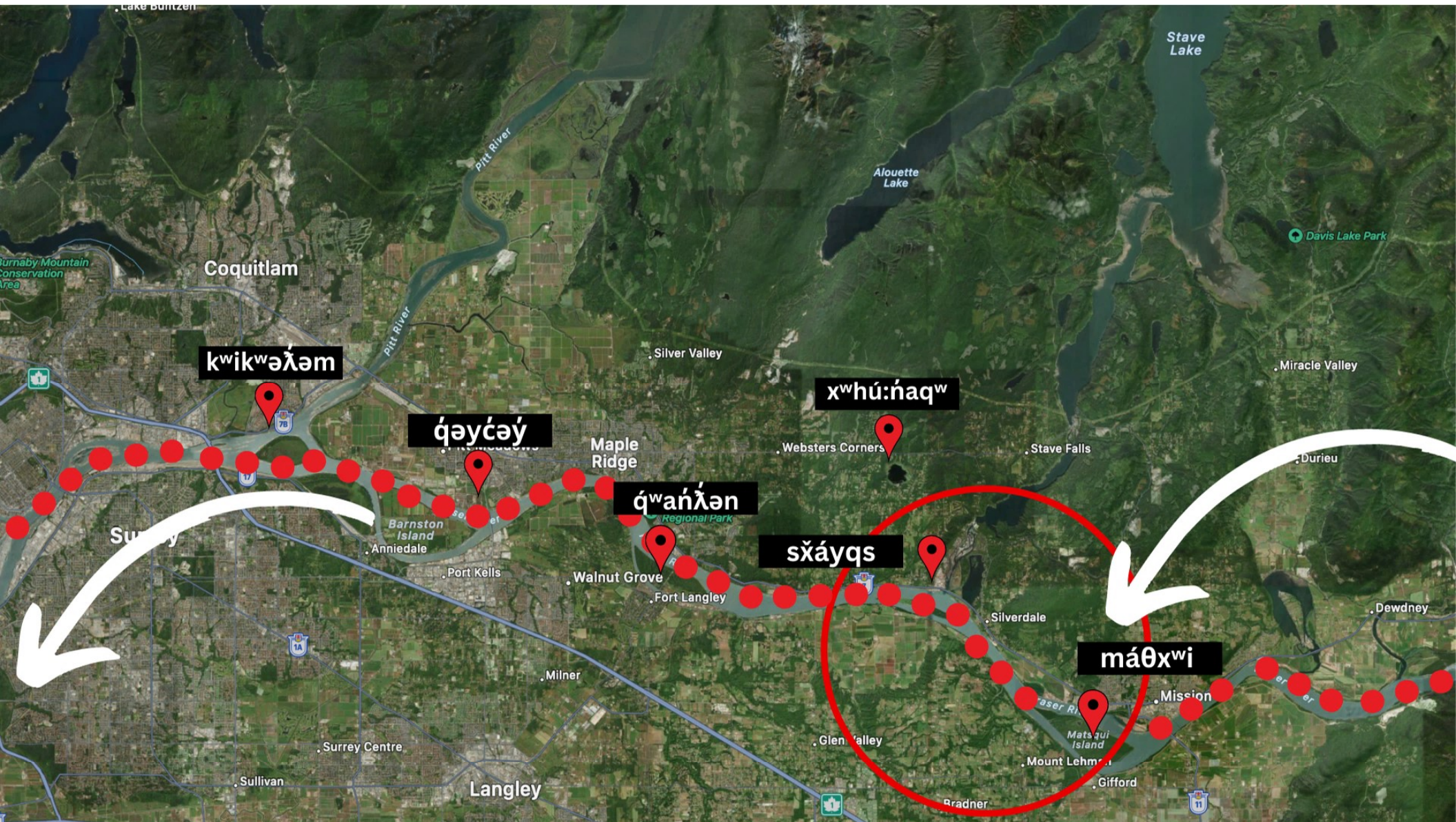
scáwñnəc

máθxwí

scəlxwíʔqʷ







**kwikwəłəm**

**ɣəγτσάγ**

**ɣʷaήλən**

**sɣάγqɿ**

**μάθxʷi**

**xʷhú:ńaqʷ**

Coquitlam

Surrey

Langley

Maple Ridge

Websters Corners

Stave Falls

Stave Lake

Alouette Lake

Davis Lake Park

Miracle Valley

Durieu

Dewdney

Mission

Silverdale

Fort Langley

Walnut Grove

Port Kells

Barnston Island

Anniedale

Milner

Surrey Centre

Sullivan

Glen Valley

Radner

Gifford

Mount Lehman

Matsqui Island

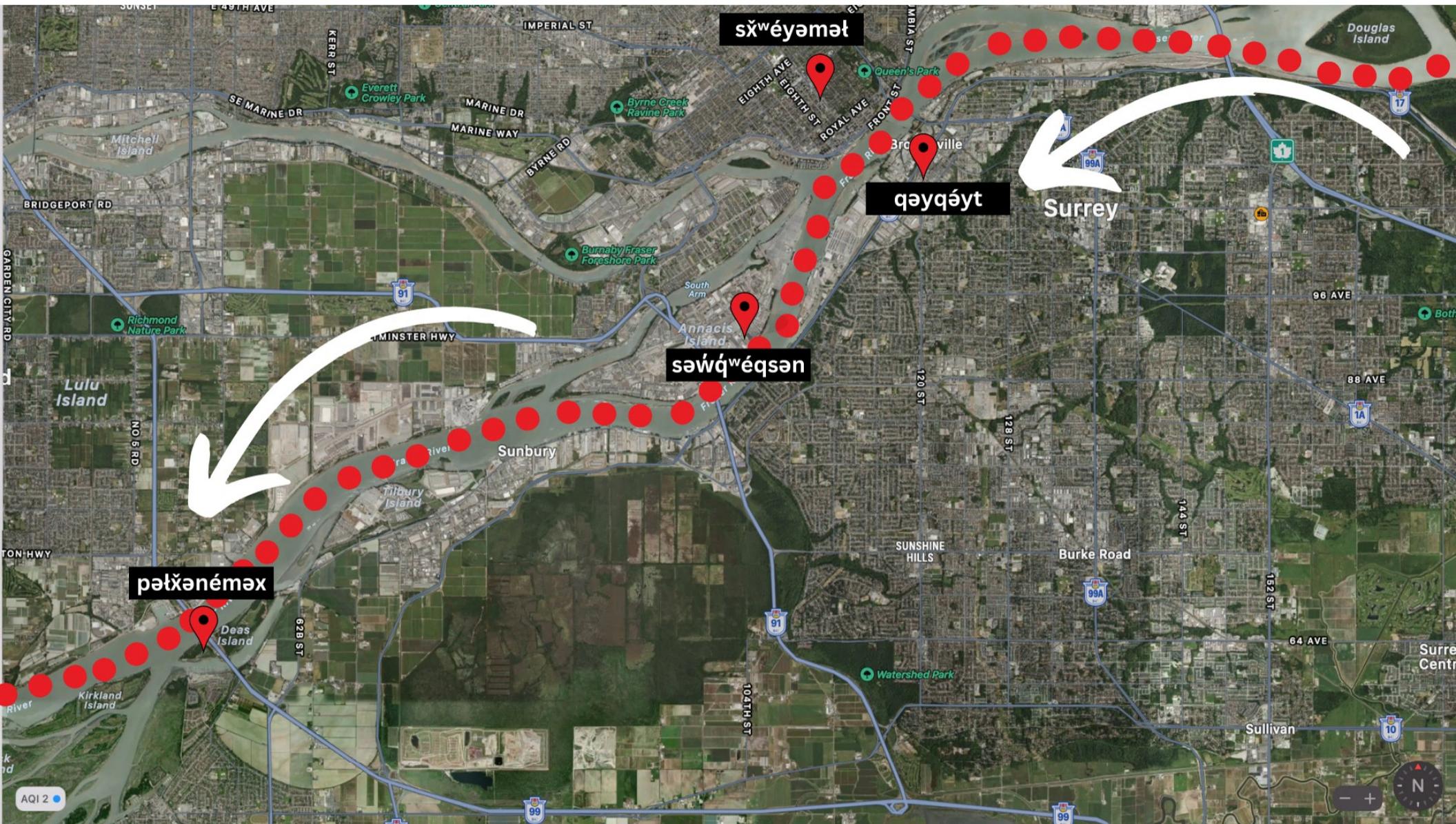
Fraser River

Pitt River

Turnaby Mountain Conservation Area

Lake Buntzen









sqʷsáθən

spáləkʷəqs

qʷtáyəm

pəłxənéməx

xʷmécənəp

Richmond

Sunbury

STEVESTON

Deas Island

Sea Island

Mitchell Island

Lulu Island

Tilbury Island

Duck Island

Barber Island

Vancouver International Airport (YVR)

Erra Nova Rural Park

Richmond Nature Park

Everett Crowley Park

Byrne Cree Ravine Park

Burnaby Fraser Foreshore Park

BRIDGEPORT RD

ALDERBRIDGE WAY

WESTMINSTER HWY

STEVESTON HWY

SE MARINE DR

MARINE DR

MARINE WAY

BYRNE RD

NO 2 RD

NO 5

62B ST

91

99

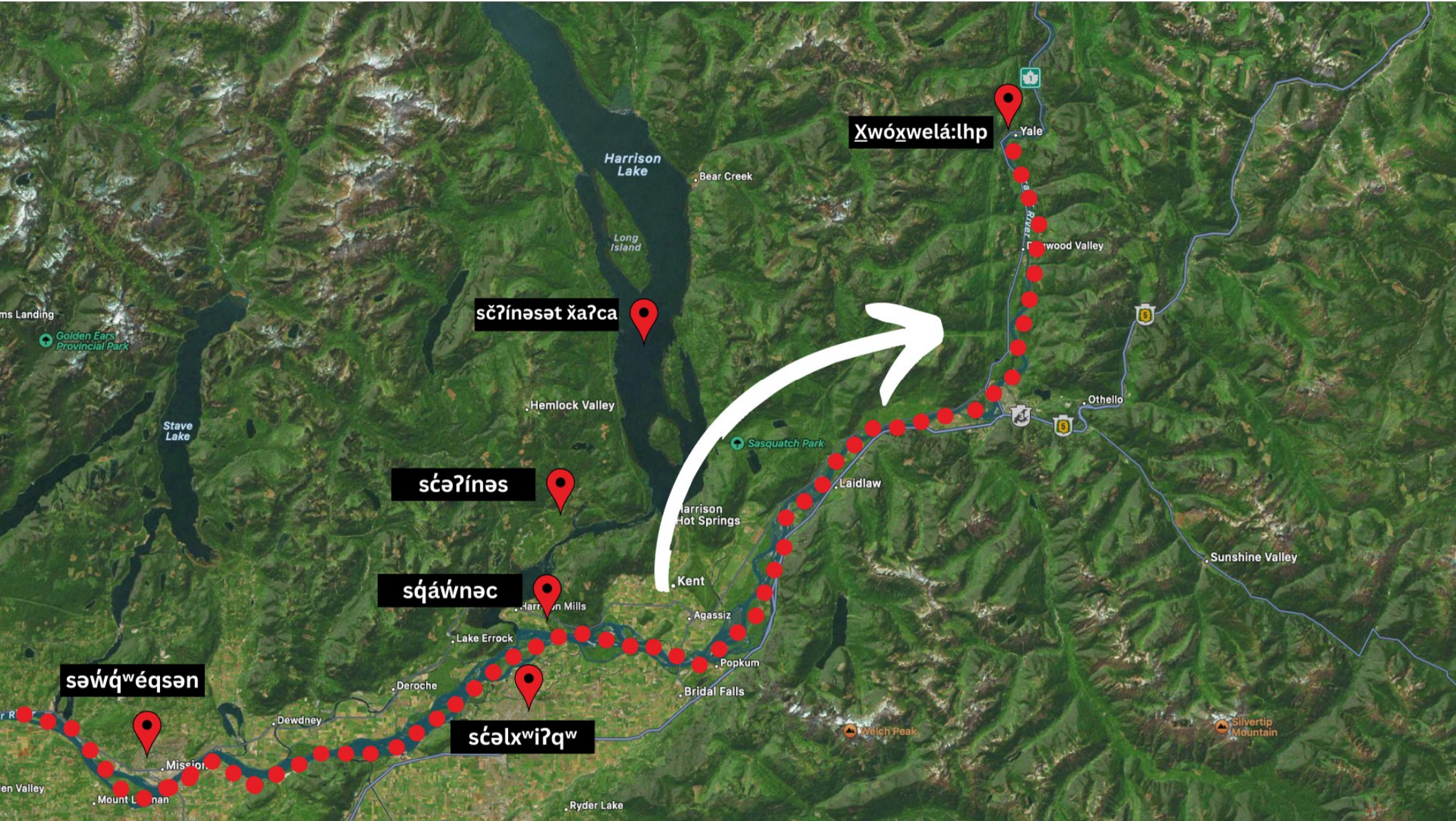












**Χωόχwelá:lhp**

**sčʔínəsət ʔaʔca**

**sčəʔínəs**

**sqáʔnəc**

**səwqʷéqsən**

**sčəlxwíʔqʷ**

Harrison Lake

Bear Creek

Long Island

Hemlock Valley

Sasquatch Park

Harrison Hot Springs

Kent

Lake Errock

Agassiz

Popkum

Bridal Falls

Stave Lake

Mission

Dewdney

Deroche

Ryder Lake

Yale

Wood Valley

Othello

Sunshine Valley

Welch Peak

Silvertip Mountain



**ᓄᓐᓇᓇᓐᓐᓐᓐ ᓐᓐᓐᓐᓐ**



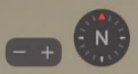




საბაგაჟი სტატლუ

ბაგაჟი

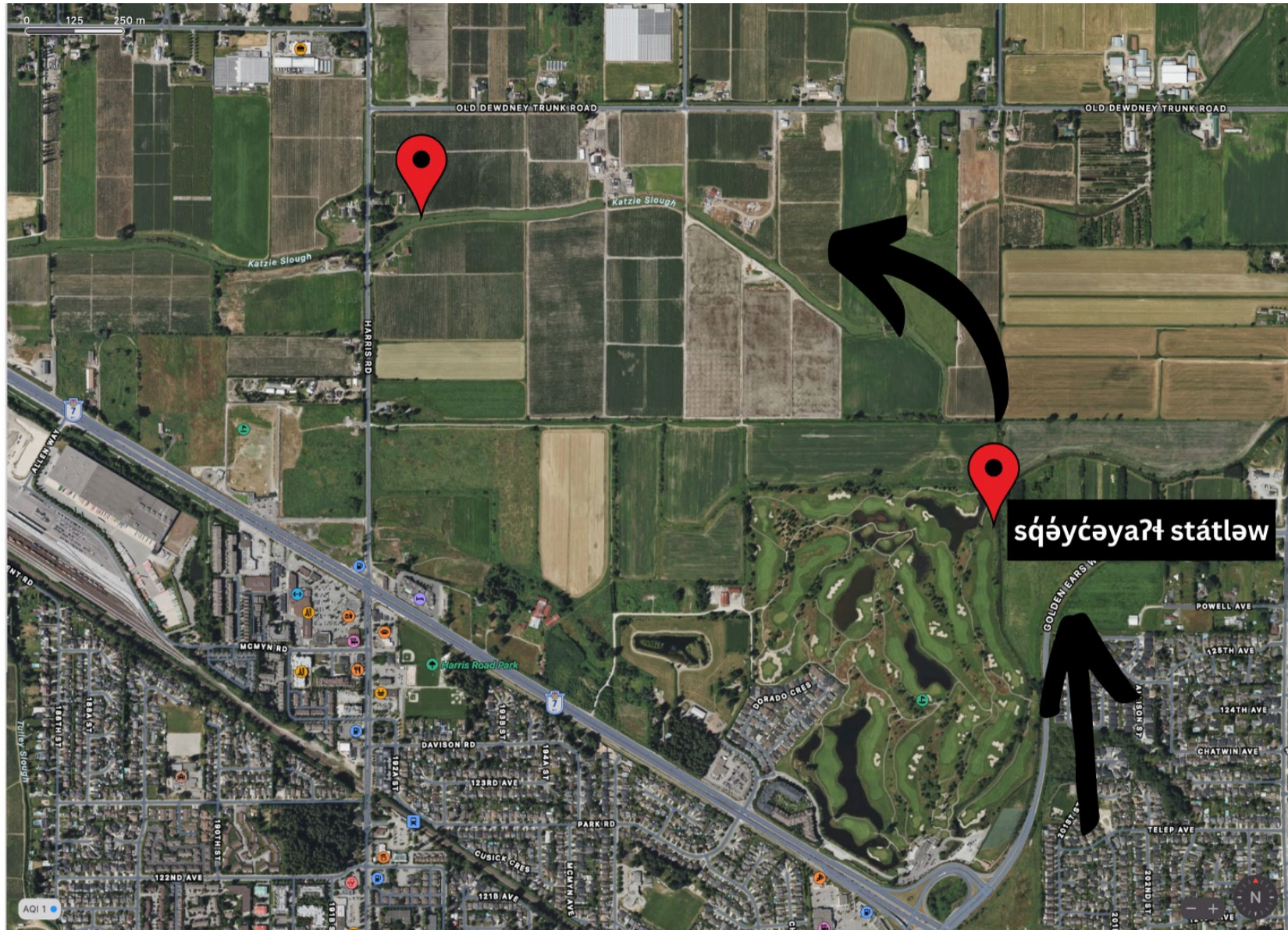
AQI 2















s'qay'cayag' statlew'



AQI 2

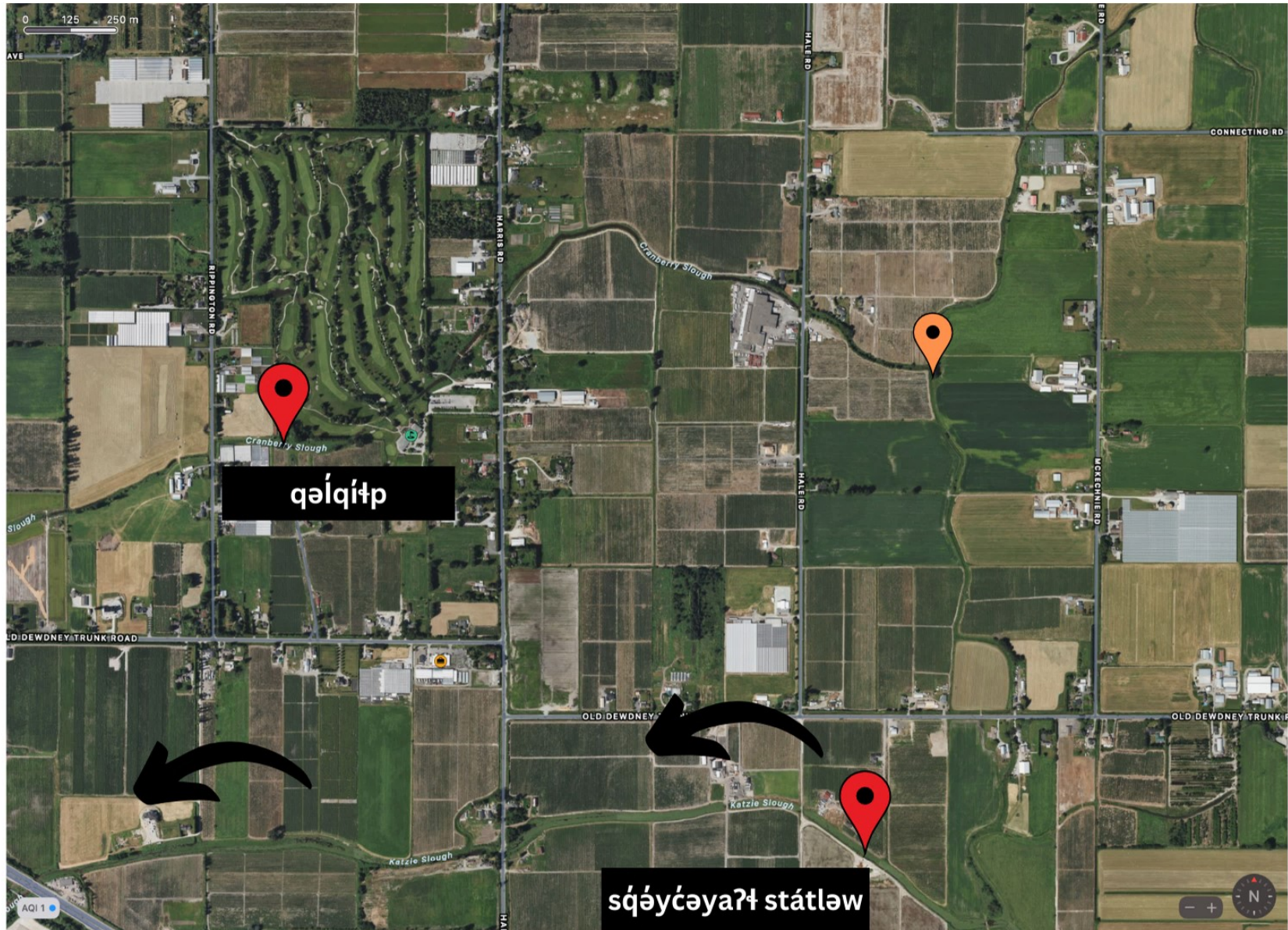




საფრანგული სტაილ

საფრანგული სტაილ









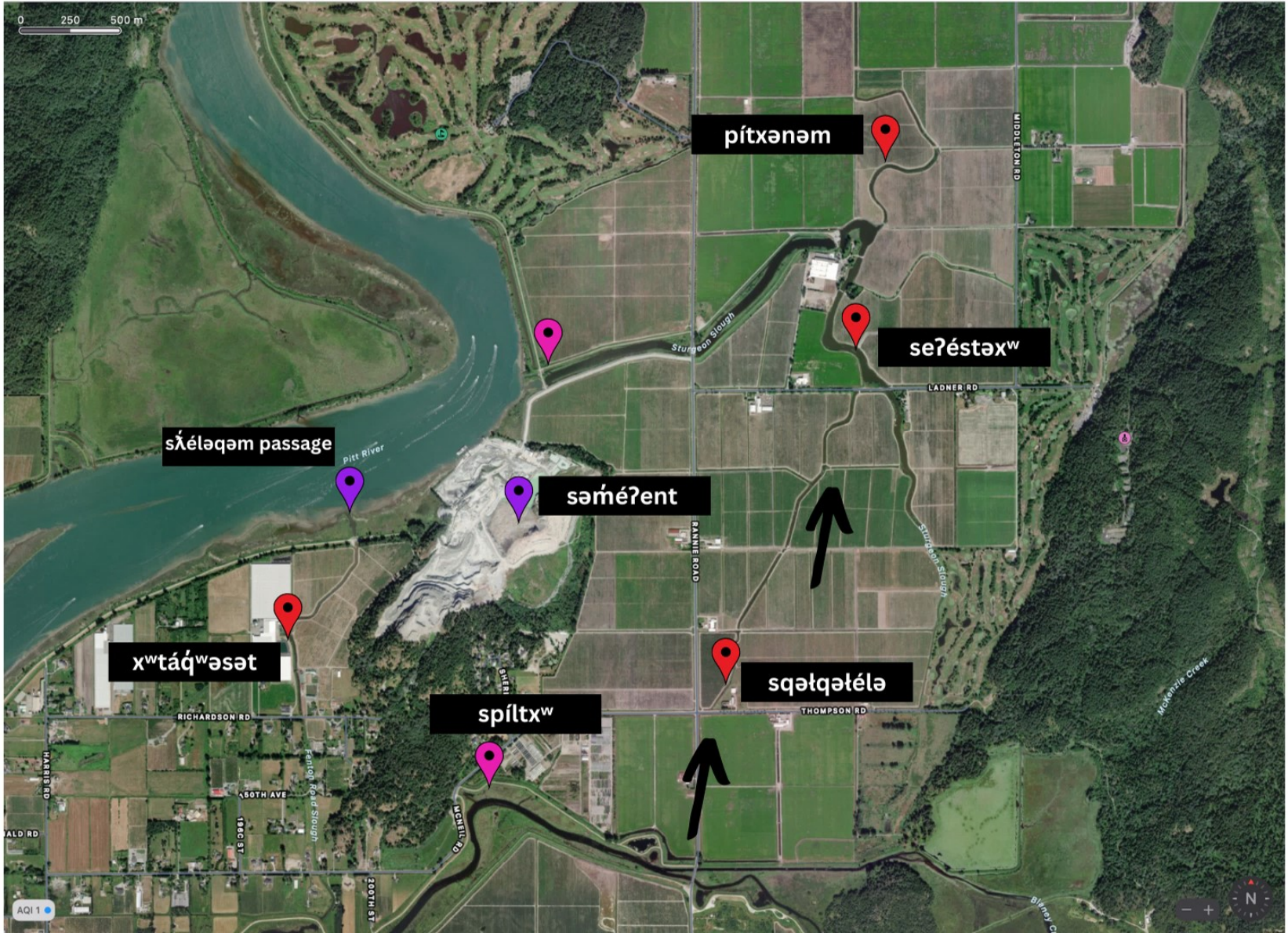
σφάλματα σταίω

αίλιπ





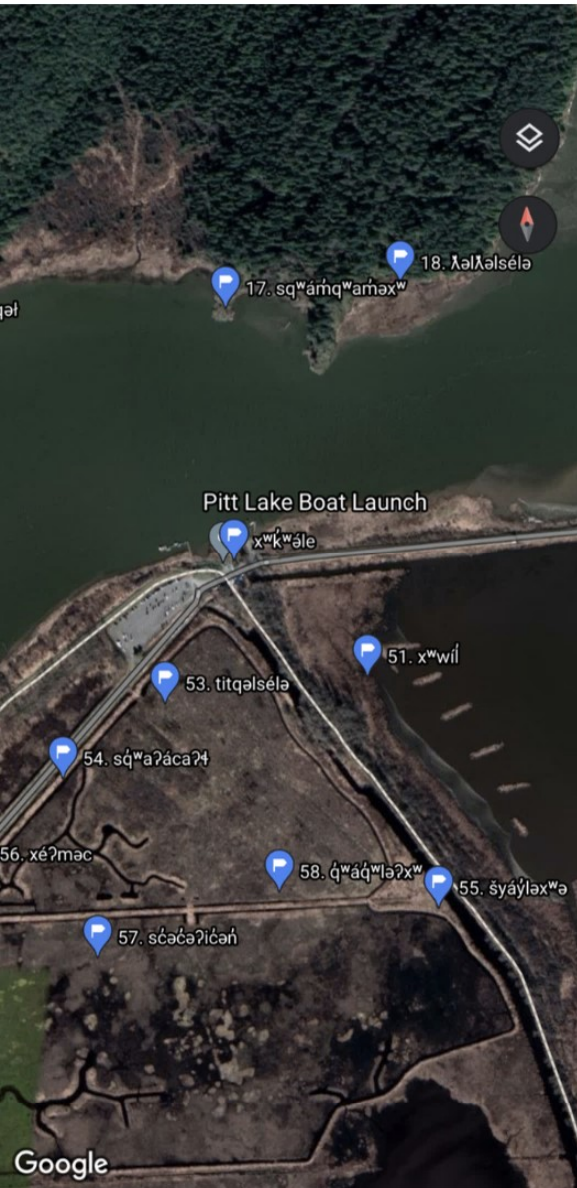








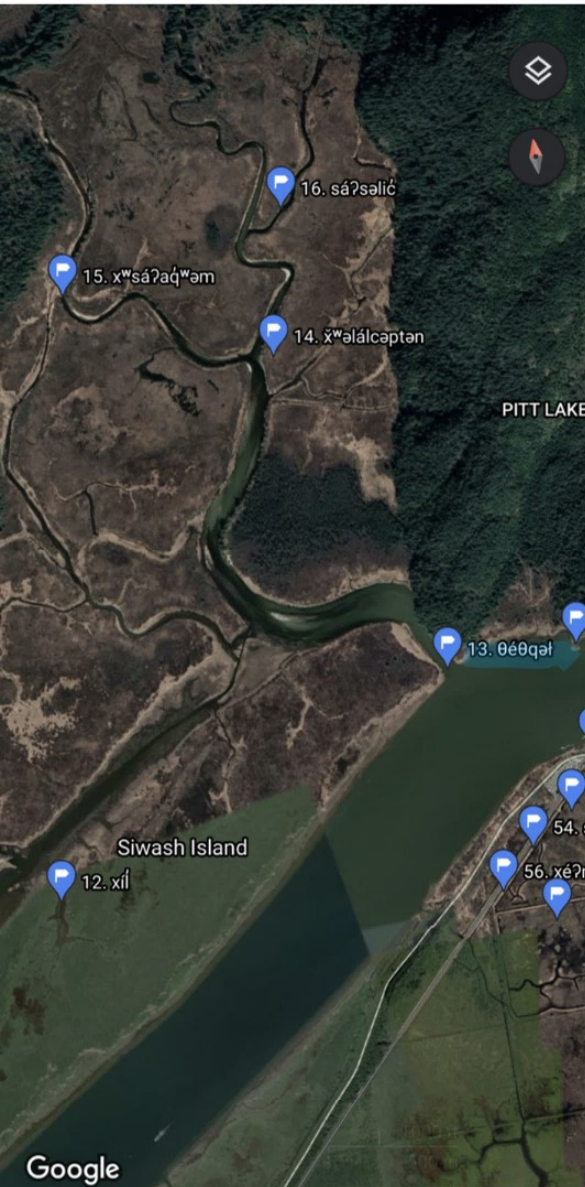




## Traditional hunting & gathering areas in sḡə́ycəyaʔt̚ ʃaʔca

17. **sḡə́mḡwaməxʷ** - a rock on the southern shore of IR4, called Siwash rock by the whites.
18. **ʃəlʃəlséle** - the south eastern point of IR4. This was a house site belonging to the Pitt Lake people.
51. **xʷwíł** - the shore between the slough and the point.
52. **xʷkʷəle** - the point opposite IR4
53. **titqəlséle** - a crab apple tree near the point, the old people always pointed it out, warning that if one ate the fruit of it, he would break wind until he died.
54. **sḡə́aʔacaʔt̚** - the slough just below the point opposite IR4, the place where the Pitt Lake people were created and one of their house sites.
55. **ʃyáyləxʷə** - A seeress (ʃyáwə) who was transformed into a stump that formerly tood at the mouth of the slough (54). She could control the weather; during a cold winter when people wanted rain, they talked to her and gave her dried salmon, and when it rained too much and they wanted sunshine, they did the same. When she knew that the whites were going to dyke the place and establish a gun club, she moved across the river to the reserve where she was last seen between 17 and 18.
56. **xéʔməc** - a wapato patch of the Pitt Lake people, about half a mile south of 54.
57. **sčə́cəʔicə́h** - a wapato patch of the Pitt Lake people, about half a mile east of 56.
58. **qʷáqʷləʔxʷ** - Pitt Lake wapato patch north-east of 57.

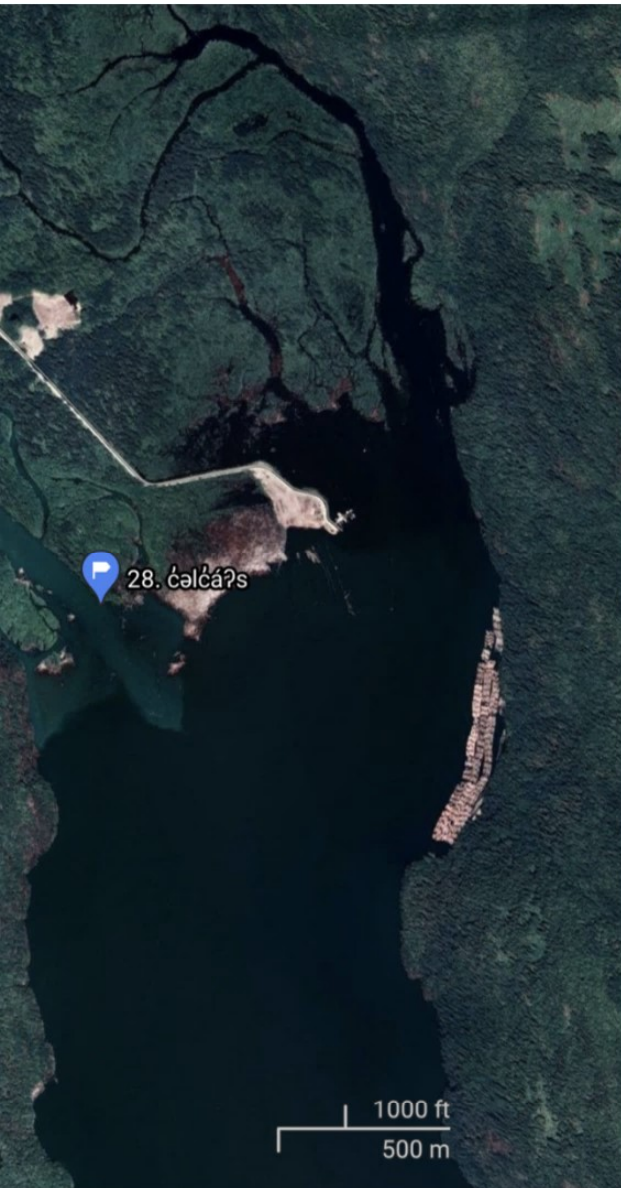




## Traditional hunting & gathering areas in 𐏃𐏃𐏃𐏃 𐏃𐏃 𐏃𐏃𐏃𐏃𐏃𐏃𐏃𐏃𐏃𐏃

12. **xíí** - the largest slough on Siwash Island, a wapato patch belonging to the Pitt Lake people
13. **𐏃𐏃𐏃𐏃** - Widgeon Creek, the main mouth
14. **𐏃𐏃𐏃𐏃𐏃𐏃𐏃** - A stump that stands near the mouth of Widgeon Creek, it was the master of all of the fish that went up the creek, until Xaals overpowered him.
15. **xʷsáʔáqʷəm** - the branch of Widgeon Creek that flows from the west and the mountain behind it.
16. **sásəlic** - the branch of Widgeon Creek that enters it from the east





## Traditional hunting & gathering areas in sʕə́ycəyaʔt̚ ʕaʔca

28. **ʕalʕáʔs** - the head of Pitt Lake, which is our current hunting grounds

37. **xilxkʷám**

38. **ʕélemey** - place where girls were transformed by Xaals

39. **sʕə́wsínəs** - grassy site at mouth of raven creek, good place for water fowl

40. **smáyəθ** - Raven creek

